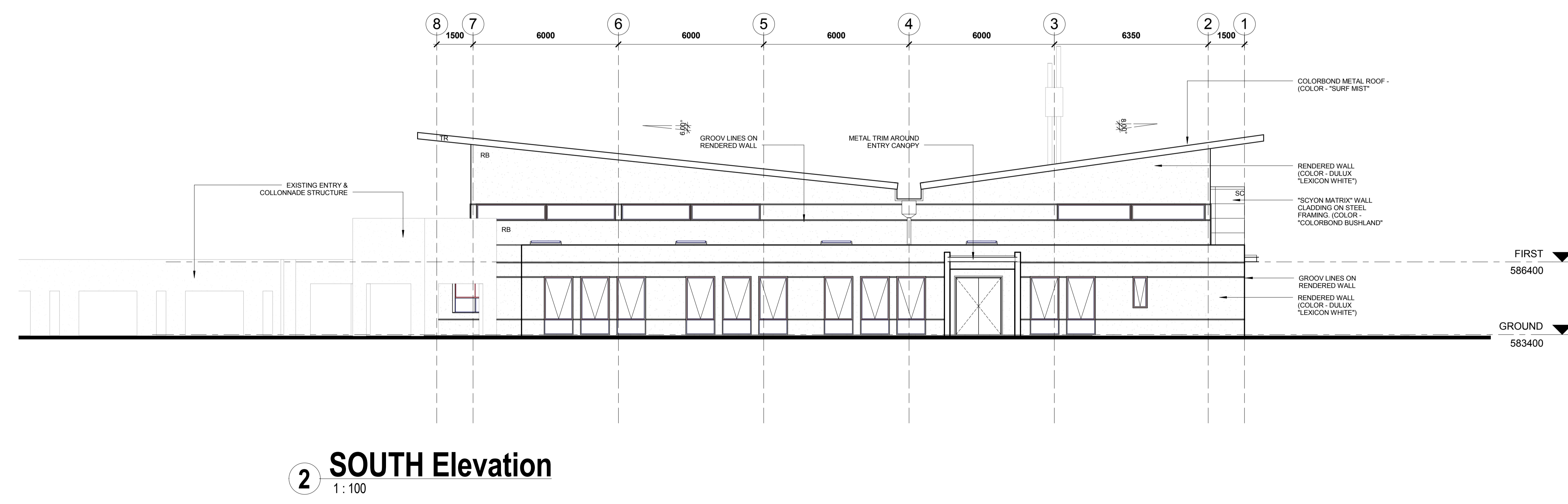
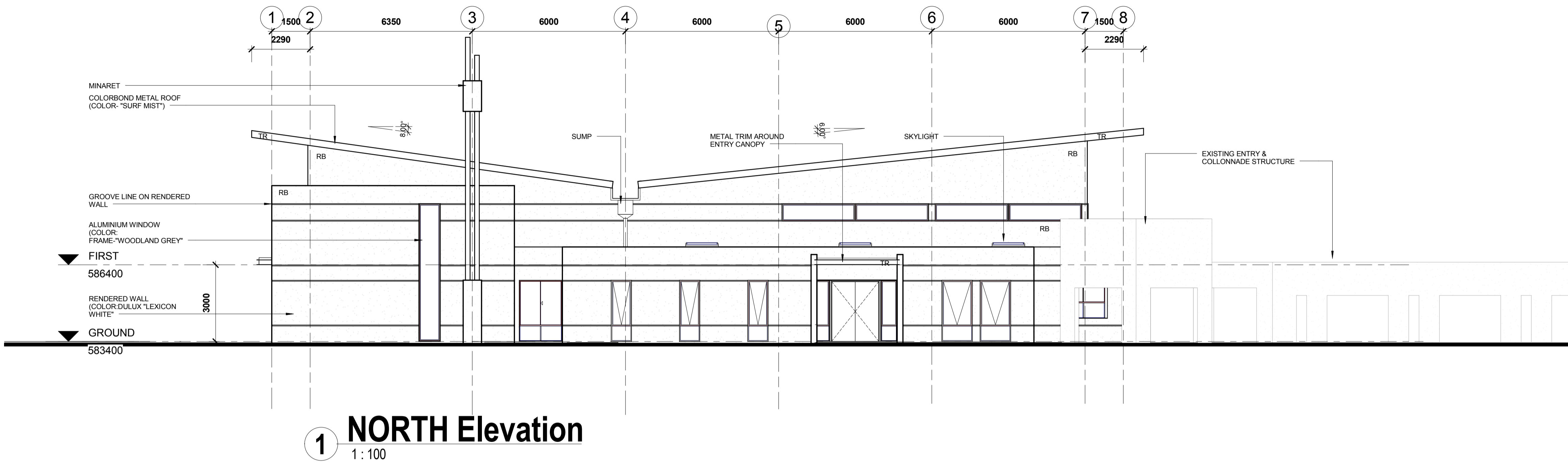


Rev	Description	By	Date
A	PRE DA ISSUE	JA	25.10.12
B	DA ISSUE	JA	29.01.13



**4TH D PLANNING & DESIGN**  
 35 Clem Hill Street, Gordon ACT 2906  
 Tel: (02) 6294 8059 Mob: 0434674176  
 Email: info@4thd.com.au Web: www.4thd.com.au  
 ACN 154 870 078

Consultants	
QUANTITY SURVEYOR	-
STRUCTURAL ENGINEER	-
CIVIL & HYDRAULIC ENGINEER	-
BCA CONSULTANT	-
CONSTRUCTION MANAGERS	-

Client  
**CANBERRA ISLAMIC CENTER INC.**

Site  
**BLOCK 4 SECTION 52 MONASH  
 221 Clive Steele Avenue**

Project  
**STAGE 2 DEVELOPMENT  
 OF CIC - ANIL COMPLEX**

Drawing Title  
**NORTH & SOUTH ELEVATIONS**

PROJECT NUMBER	Scale	1:100
CHECKED BY SH	Date	DEC. 2012
DRAWN BY JA	Rev	B
Drawing Number	North	

A11.01